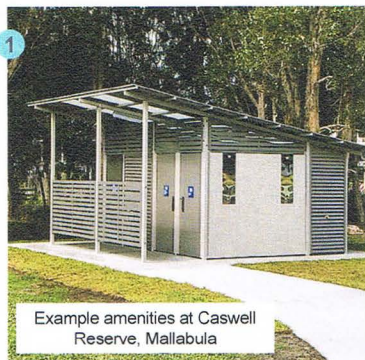


# East ward projects

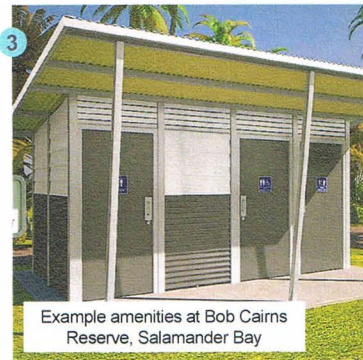
- 1 **Amenities replacement — George Reserve, Salamander Bay \$150,000**
  - Unisex accessible amenities and showers
  - Improve access to and from car parking area
- 2 **Foreshore improvements — Conroy Park, Corlette \$178,000**
  - Implement Priority 1 sand backpassing works identified under Sandy Point/Conroy Park Coastal Process Study
  - Sand material relocated to the eastern groyne area and placed within watercourse
  - Sand material also used to nourish eroded bank areas
- 3 **Amenities replacement — Little Beach, Nelson Bay \$180,000**
  - Unisex accessible amenities and showers
  - Dedicated disabled access toilet and change facility to cater for beach access wheelchair
  - Improve access to and from car parking area and swimming ramp
- 4 **Revetment work — Soldiers Point \$200,000**
  - Rock revetment wall for bank stabilisation and footpath link from marina to boat ramp
  - Environmental approvals and Aboriginal Heritage Impact Permit process required (may require funding)
- 5 **Shared pathway — Shoal Bay Foreshore, Shoal Bay \$250,000**
  - Pathway extension from Shoal Bay Wharf to Dinghy Racks
- 6 **Drainage works — Shoal Bay \$300,000**
  - Installation of infiltration systems at strategic locations within Shoal Bay catchment where they will provide the greatest benefit and improve network performance
- 7 **Road upgrade — Foreshore Drive, Corlette \$400,000**
  - Full road and culvert works costed at >\$1.6mil
  - Minor road works eastern side of culvert possible with this budget
  - Additional Black Spot funding (\$190,000) works to build traffic calming devices along Foreshore Drive
- 8 **Stage 1, East Donald St Carpark demolition and at grade car parking, including amenities replacement — Nelson Bay \$1.4 million**
  - Demolition of multi-deck structure and construction of new at grade car park to provide approximately 105 car parking spaces (subject to design)
  - Amenities replacement at current location, additional costs at alternate location
- 9 **Tomaree Sports Complex multipurpose building — Salamander Bay \$2 million**
  - Multipurpose building catering for regular users and major events
  - Includes; kiosk, change rooms, referees room and first aid, public amenities, storage and function space

\* All projects listed are concept only. Subject to detailed design and further consultation.

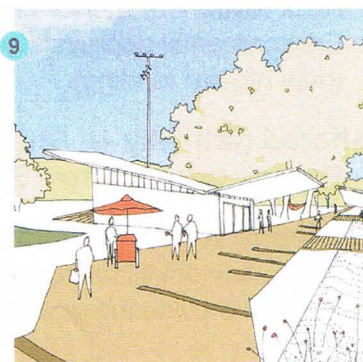
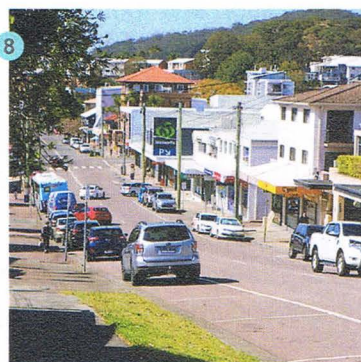
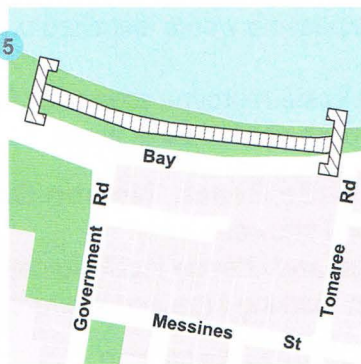




Example amenities at Caswell Reserve, Mallabula




Example amenities at Bob Cairns Reserve, Salamander Bay



\* All projects listed are concept only. Subject to detailed design and further consultation.

## HOW CAN I HAVE MY SAY?

You can tell us your priority projects at our Community Information Sessions or on our Have Your Say website until 25 July. Go to:

 [haveyoursay.portstephens.nsw.gov.au/port-stephens-2020](https://haveyoursay.portstephens.nsw.gov.au/port-stephens-2020)

*Our future. Our Port Stephens.*

council@portstephens.nsw.gov.au | 02 4988 0255  
PORTSTEPHENS.NSW.GOV.AU    



**PORT STEPHENS**  
COUNCIL