

SHOAL BAY PLAYGROUND

Port Stephens Council are providing a new and improved playground to Shoal Bay and are seeking community input about where to build it.

Background

Shoal Bay is a popular family destination however the existing playground does not support a range of abilities and age groups. A replacement playground is going to be built and various locations have been investigated. Council is now seeking community feedback on the preferred location.

Playground Details

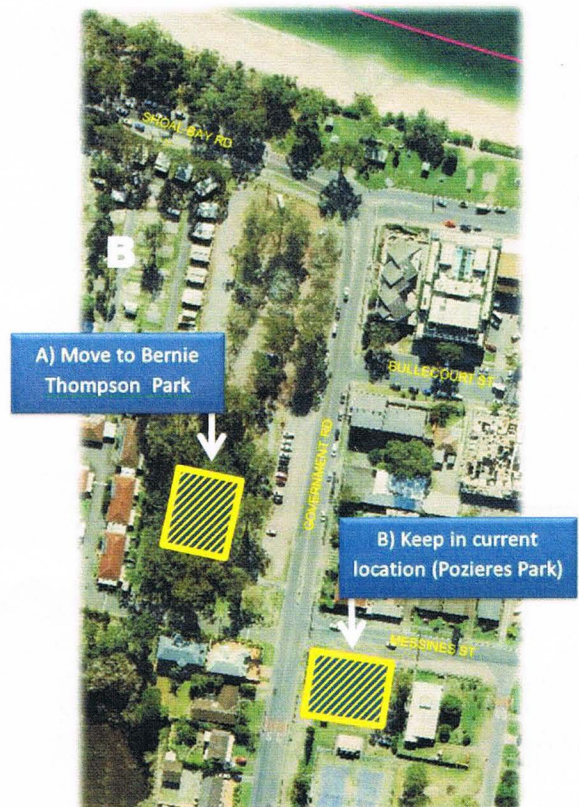
The playground is scheduled for construction in 2018. It will be an adventure playground suited to a wide range of ages and abilities. The new playground will provide local residents and visitors an attractive public space to utilise. The project is outlined in Council's Strategic Asset Management Plan and funding of \$120,000 has been allocated.

Location

Suitable locations for the new playground include Bernie Thompson Reserve at 6 Government Road and Pozieres Park at 13 Messines Street (the location of the existing playground). The Shoal Bay foreshore area was also considered however is not a viable site due to space restrictions.

How You Can Help

Do our quick poll to help decide where to build the new playground:



A) Bernie Thompson Reserve at 6 Government Road*

OR

B) Current location at Pozieres Park at 13 Messines Street

Vote online at haveyoursay.portstephens.nsw.gov.au/shoal-bay-playground

or call to register your vote on **4988 0255**

Voting is open from 13 November to 3 December 2017

* Pending final environmental assessment

For further information contact

Port Stephens Council

Community and Recreation Section

Email: council@portstephens.nsw.gov.au

Ph: 02 4988 0255

